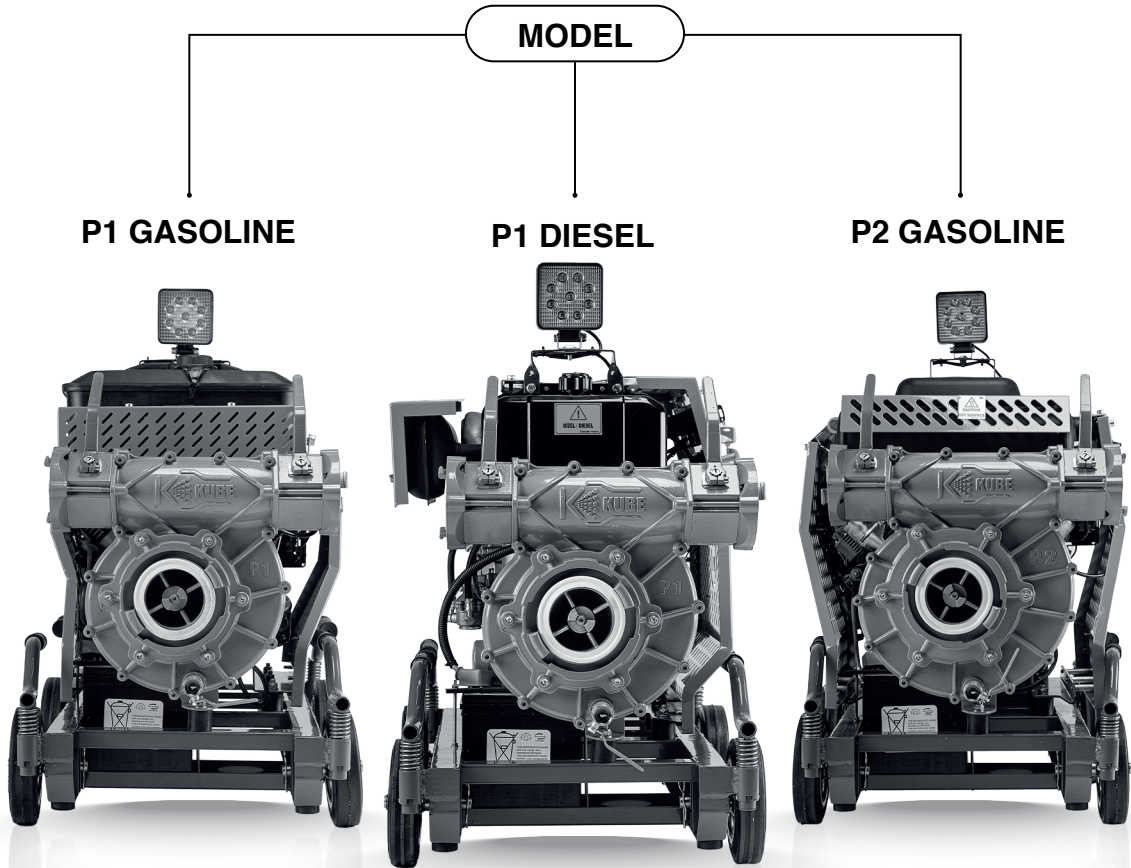


KUBE POMPA



www.kubepompa.com

Copyright © Kube Pump Technologies Industry Trade Inc., Kocaeli, TR. All rights reserved.

This manual contains safety information to make you aware of the hazards and risks associated with motopump and how to avoid them.

It also contains instructions for the proper use and care of the motopump. Kube Pump Technologies Industry Trade Inc recommends you to read both the instruction of this motopump and the instruction of the motor which used on the product. Save these original instructions for future reference.









Note: The figures and illustrations in this manual are provided for reference only and may differ from your specific model. Contact with Kube Pump Technologies Industry Trade Inc or your dealer which you purchase this product if you have questions.









For replacement parts or technical assistance, record below the motopump model, type, and code numbers along with the date of purchase. These numbers are located on your motopump

Purchase Date	
Motopump Model – Fuel Type	
Motopump Serial Number	



OPERATOR SAFETY

Hazard Symbols and Meanings

SYMBOL	MEANING
	Safety information about hazards that can result in personal injury
	Fire hazard
	Shock hazard
	Hot surface hazard
	Thrown object hazard – Wear eye protection
	Frostbite hazard
	Amputation hazard – moving parts
	Thermal heat hazard

SYMBOL	MEANING
	Read and understand the Operator's Manual before operating or servicing the unit
	Explosion hazard
	Toxic fume hazard
	Noise hazard – Ear protection recommended for extended use
	Explosion hazard
	Kickback hazard
	Chemical Hazard
	Corrosive

Recycling Information

		All packaging, used oil, and batteries should be recycled according to applicable government regulations.
---	---	---

OPERATION

Pre-Operation Checks



1. Check the engine oil and oil level.
2. Check the pump bearing oil.
3. Check the fuel level.

Pre-Operation Preparation



1. Suction hoses should be connected starting from the pump side.
2. The arrow marks on the hose must be positioned towards the pump.
3. While connecting the hoses, the couplings on the hose ends should be aligned to engage each other and tightened with the hose spanner.
4. The required amount of hoses should be connected according to the suction depth.
5. If there is a suction depth of more than 4 meters, the safety rope must be tied and the weight of the hose must be taken properly.
6. Strainer should be connected to the end of last hose.
7. During the operation of the hoses, care should be taken that the maximum breakage angle does not exceed 90 degrees.
8. A maximum of 5 suction hoses should be connected consecutively.

Operation



1. Make sure the pump outlet valves are open.
2. Make sure the drain valve is open.
3. Make sure the throttle is at the minimum level.
4. Pull the choke lever if the engine is cold. (Only for P1 Gasoline model.)
5. Turn the ignition key clockwise once and provide electric connection to the engine.
6. After turning the ignition key, wait for the injection sound from the engine to stop. (Only for P2 Gasoline model.)
7. Start the engine by turning the ignition key clockwise.
8. With the engine running, release the ignition key to return to position 1.
9. After the engine starts, push the choke lever. (Only for P1 Gasoline model.)
10. Use the throttle to set the engine speed to the desired position.
11. After the air in the hose and the pump has escaped, close the drain valve and the pump outlet valve that is not needed.
12. Continue to use the pump by checking the pump pressure value.

Stopping



1. Set the throttle lever to minimum.
2. Continue to run the engine in idle position for 15-20 seconds.
3. Stop the engine by turning the ignition key counterclockwise.
4. Open the drain valve and the pump outlet valves.

Post Operation



1. Suction hoses should be removed starting from the strainer side.
2. The attached safety rope, if any, should be removed for release the hoses.
3. Each hose must be removed with a hose spanner.
4. The remaining water in the hoses should be poured.
5. Hoses and strainer should be stored properly for next use.

Security Precautions



1. The outlet valves should not be closed while the pump is in operation and under high pressure. In order for the pump outlet valves to be closed, the engine speed must be set to idle.
2. During the installation and removal of the discharge hose to the outlet valves, the engine speed should be set to idle position and the outlet valves should be closed.

3. After the pump operation is completed, the drain valve must be opened to prevent the freezing of the remaining water in the pump, and it must be ensured that the remaining water in the pump is discharged.
4. No weight should be placed on the suction hoses during use or in non-use situations. Cars and similar vehicles should not pass over the hoses.
5. After the pump operation is completed, if the pump has worked with dirty or salty water; the pump, suction hoses and the strainer should be cleaned internally. All equipment exposed to dirty or salt water should be washed with clean and fresh water. This process must be applied after each operation before storage.

MAINTENANCE

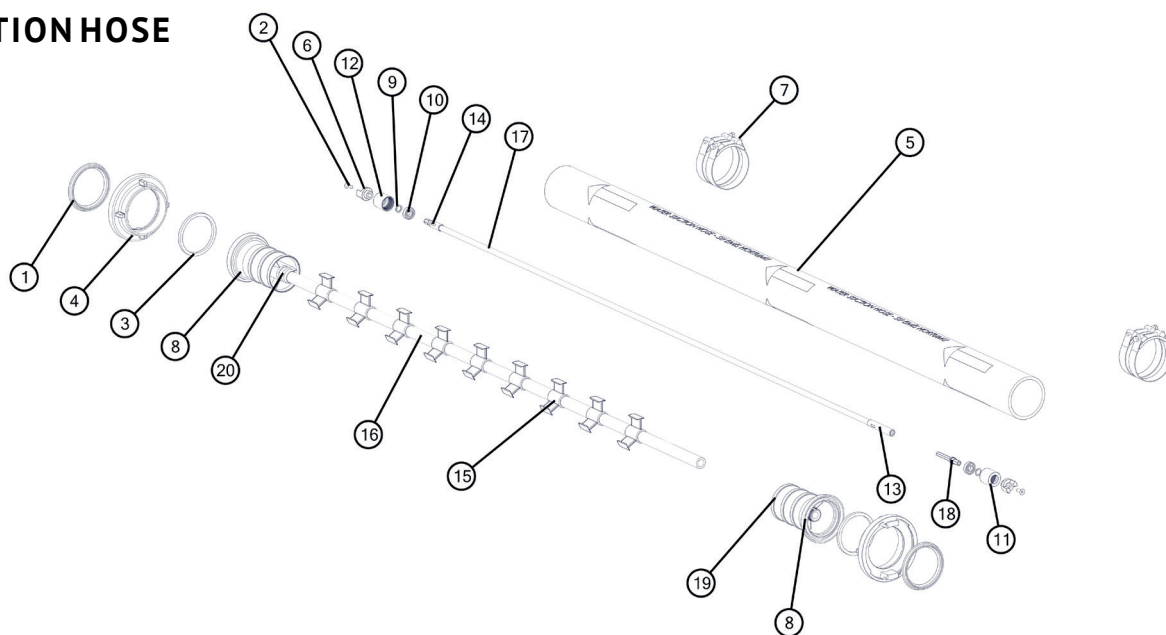
After each use
<ul style="list-style-type: none"> • Clean the pump if it has been operated in dirty or salty water. • Clean the suction hoses if they have been worked in dirty or salty water. • Clean the strainer if it has been worked in dirty or salty water. • Clean the discharge hoses if they have been worked in dirty or salty water.
Every 8 hours or Daily
<ul style="list-style-type: none"> • Check engine oil level. • Clean area around muffler and controls. • Control the outlet valves.
Every 15 days
<ul style="list-style-type: none"> • Check the condition of battery.
Every 30 days
<ul style="list-style-type: none"> • Check the safety ropes. • Check for leaks in the fuel tank. • Check the discharge hoses for tears and holes.
Every 100 hours or Annually (Whichever comes first)
<ul style="list-style-type: none"> • Lubricate the spiral shaft inside the suction hose. • Change the pump bearing oil. • Replace spark plugs. • Change engine oil. • Replace oil filter. • Service air filter. • Service exhaust system.
Every 250 hours
<ul style="list-style-type: none"> • Check valve clearance. Adjust if necessary. (This operation should only be carried out by the technical services or authorized persons who authorized by the engine company.)
Every 400 hours or Annually (Whichever comes first)
<ul style="list-style-type: none"> • Replace air filter. • Replace fuel filter. • Service cooling system. • Clean oil cooler fins.

TECHNIC

For technical drawings and parts lists, please visit www.kubepompa.com or call +90 262 371 41 74 – Ext 19 or send an email to kube@kubepompa.com with the title “Request for Technical Details”.

For support in case of any problems or malfunctions, contact your local dealer or visit www.kubepompa.com or call +90 262 371 41 74 – Ext 19 or send an email to kube@kubepompa.com with the title “Troubleshooting”.

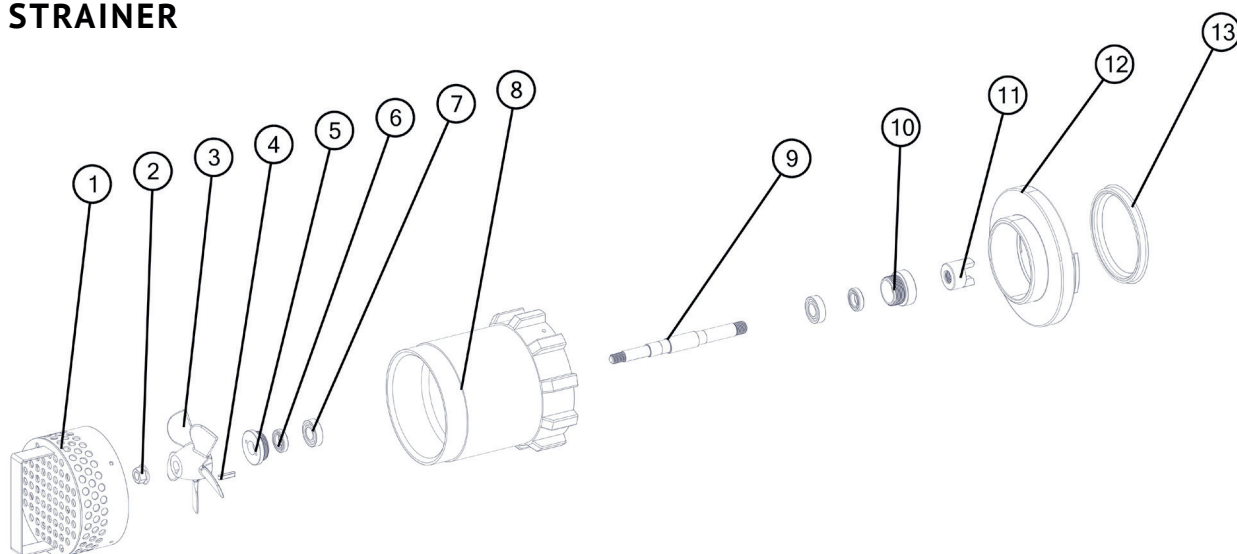
SUCTION HOSE



PART NO	PART DESCRIPTION	QTY
1	GASKET STORZ 110A	2
2	COUNTERSUNK BOLT M8x20	2
3	HOSE THRUST WASHER	2
4	HOSE UNION 110A	2
5	HOSE	1
6	COUPLING	2
7	CLAMP 110	4
8	PLASTIC HOSE UNION	2
9	WASHER M14	2
10	SS 6002 2RS BALL BEARING	2
11	ROLLER BEARING RIGHT	1

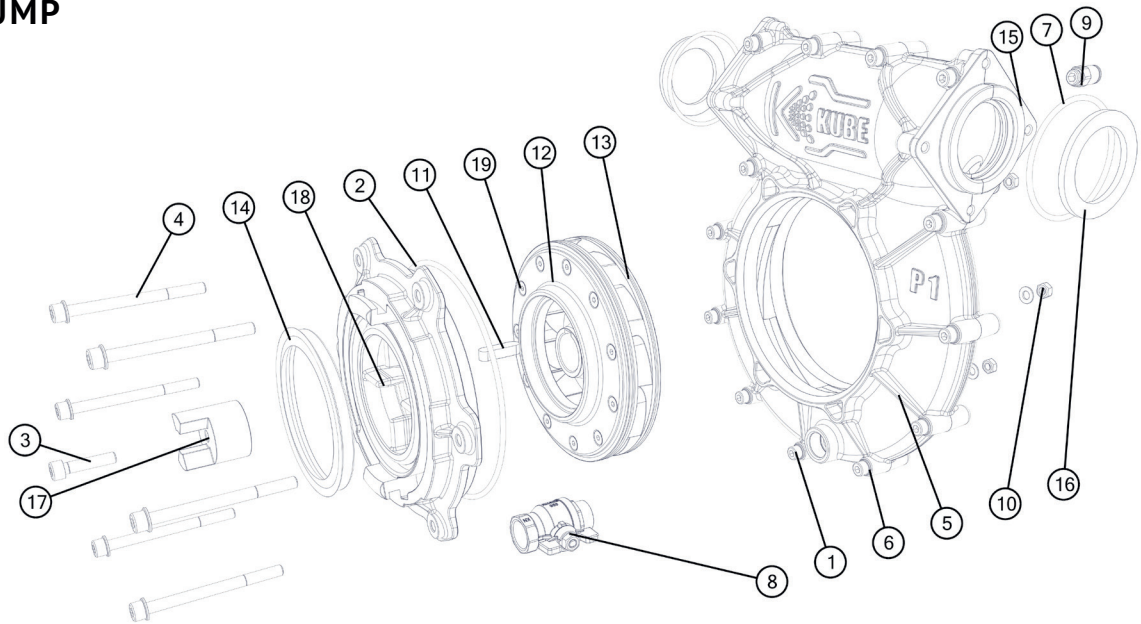
PART NO	PART DESCRIPTION	QTY
12	ROLLER BEARING LEFT	1
13	SPIRAL FEMALE END	1
14	SPIRAL MALE END	1
15	SPIRAL GUIDE	9
16	SPIRAL CASE	1
17	SPIRAL SHAFT WIRE	1
18	SPIRAL DRIVE SHAFT	1
19	SPIRAL FIXING HOLDER RIGHT	1
20	SPIRAL FIXING HOLDER LEFT	1

STRAINER



PART NO	PART DESCRIPTION	QTY
1	FILTER	3
2	M14 FIBERED NUTS	1
3	PROPELLER	1
4	5x25 COTTER	1
5	FRONT SEAL COVER	1
6	SHAFT SEAL 17x30x7	2
7	SS 6003 2RS BALL BEARING	2
8	STRAINER BODY	1
9	STRAINER SHAFT	1
10	REAR SEAL COVER	1
11	STRAINER COUPLING	1
12	STRAINER UNION 110A	1
13	GASKET STORZ 110A	1

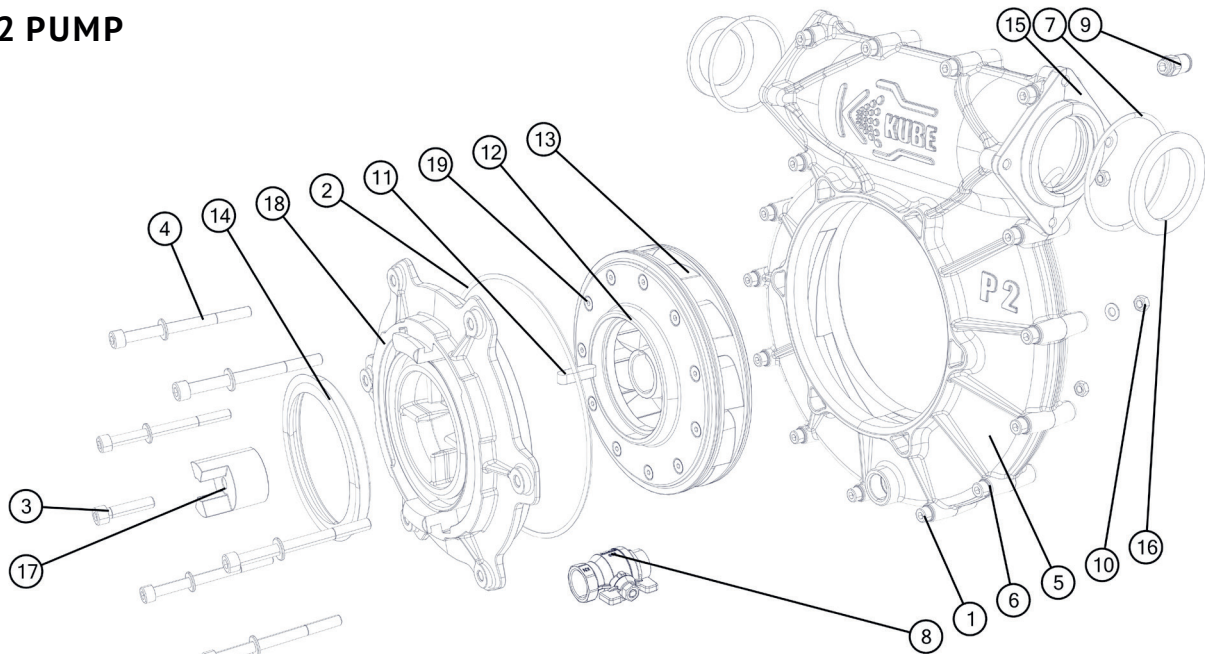
P1 PUMP



PART NO	PART DESCRIPTION	QTY
1	M8x40 HEX SOCKET BOLT	13
2	ORING 4x185	1
3	M8x35 HEX SOCKET BOLT	1
4	M8x100 HEX SOCKET BOLT	6
5	PUMP FRONTSIDE BODY	1
6	M8 WASHER	25
7	ORING 4x85	2
8	DRAIN VALVE 3/4	1
9	UNION 1/4 x8	1
10	M8 FIBERED NUT	6

PART NO	PART DESCRIPTION	QTY
11	COTTER 10x36	1
12	PUMP IMPELLER COVER	1
13	PUMP IMPELLER	1
14	STORZ GASKET 110A	1
15	PUMP BACKSIDE BODY	1
16	VALVE GASKET	2
17	SHAFT COUPLING	1
18	PUMP FRONT COVER	1
19	M6x20 COUNTERSUNK BOLT	11

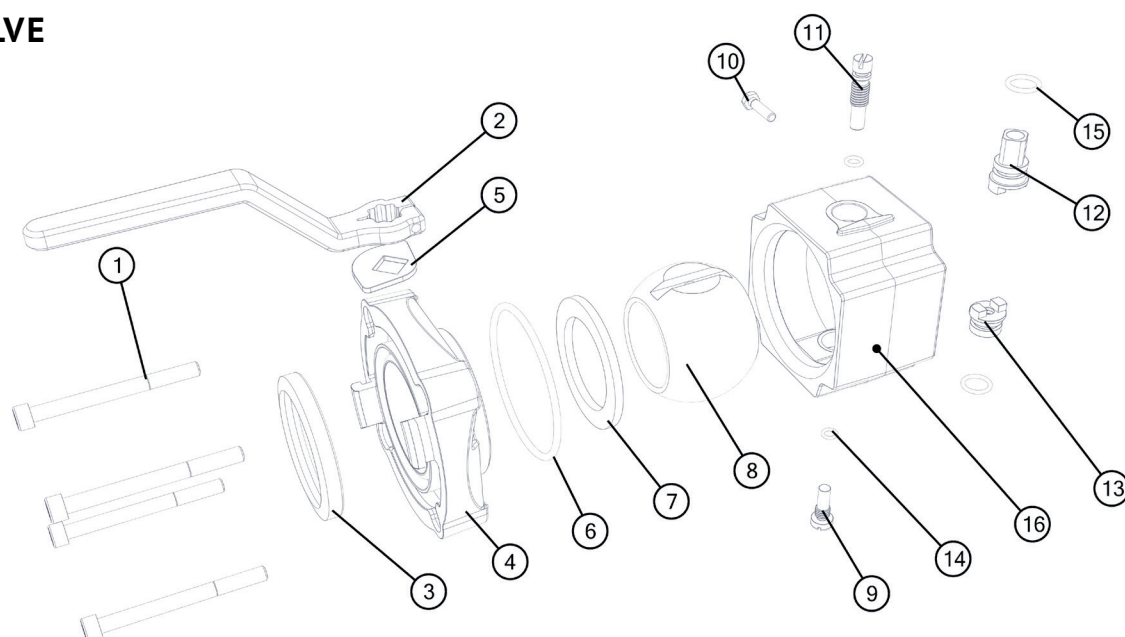
P2 PUMP



PART NO	PART DESCRIPTION	QTY
1	M8x40 HEX SOCKET BOLT	15
2	ORING 4x200	1
3	M8x35 HEX SOCKET BOLT	1
4	M8x100 HEX SOCKET BOLT	6
5	PUMP FRONTSIDE BODY	1
6	M8 WASHER	27
7	ORING 4x85	2
8	DRAIN VALVE 3/4	1
9	UNION 1/4x8	1
10	M8 FIBERED NUT	6

PART NO	PART DESCRIPTION	QTY
11	COTTER 10x36	1
12	PUMP IMPELLER COVER	1
13	PUMP IMPELLER	1
14	STORZ GASKET 110A	1
15	PUMP BACKSIDE BODY	1
16	VALVE GASKET	2
17	SHAFT COUPLING	1
18	PUMP FRONT COVER	1
19	M6x20 COUNTERSUNK BOLT	11

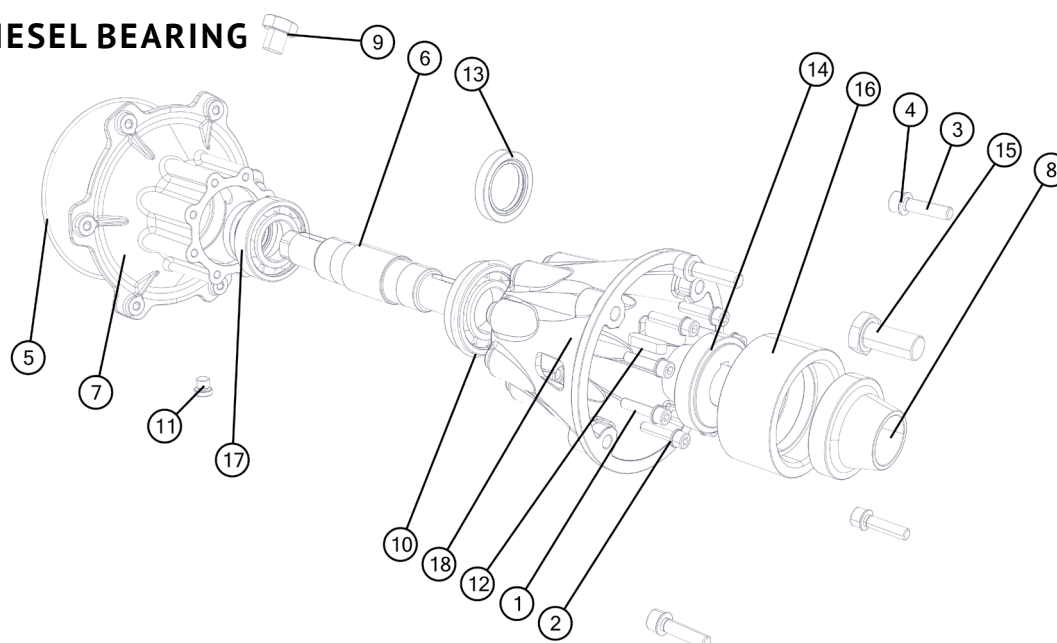
VALVE



PART NO	PART DESCRIPTION	QTY
1	M8x90 HEX SOCKET BOLT	4
2	VALVE LEVER	1
3	GASKET STORZ 75B	1
4	VALVE HOSE UNION	1
5	STOPPER WASHER	1
6	ORING 4x85	1
7	VALVE GASKET	1
8	VALVE HUB BALL	1
9	HUB IDLER BEARING BOLT	1

PART NO	PART DESCRIPTION	QTY
10	M6x25 HEX SOCKET BOLT	1
11	HUB LEVER BEARING BOLT	1
12	HUB LEVER BEARING	1
13	HUB IDLER BEARING	1
14	ORING 2x7	2
15	ORING 2,62x15,54	2
16	VALVE BODY	1

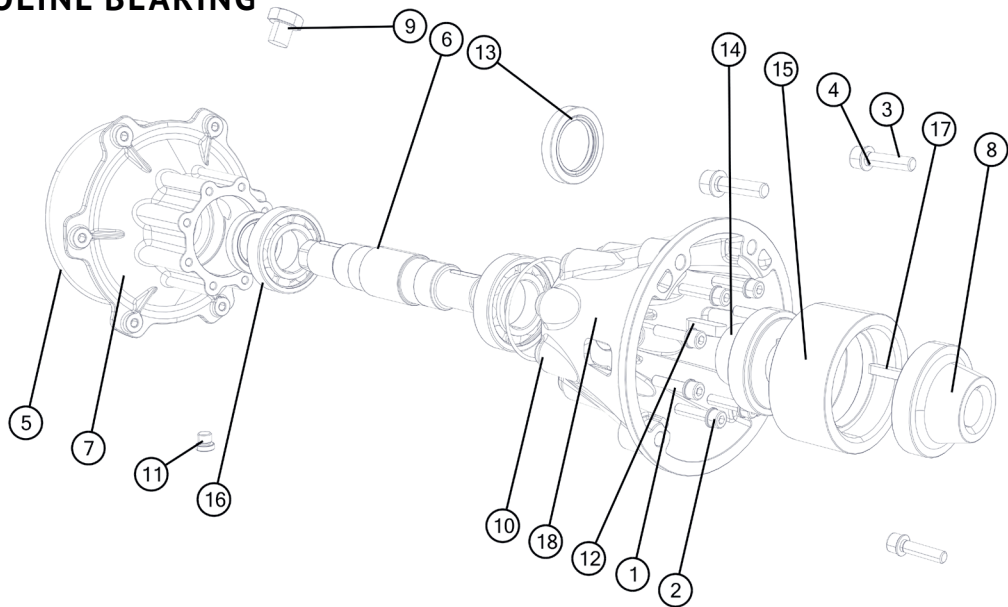
P1 - DIESEL BEARING



PART NO	PART DESCRIPTION	QTY
1	M8x35 HEX SOCKET BOLT	8
2	M8 WASHER	8
3	M10x40 HEX SOCKET BOLT	4
4	M10 WASHER	4
5	ORING 4x185	1
6	PUMP SHAFT	1
7	PUMP SHAFT BEARING	1
8	MOTOR COUPLING	1
9	M20x15 BLIND CAP	1
10	ORING 3x80	1

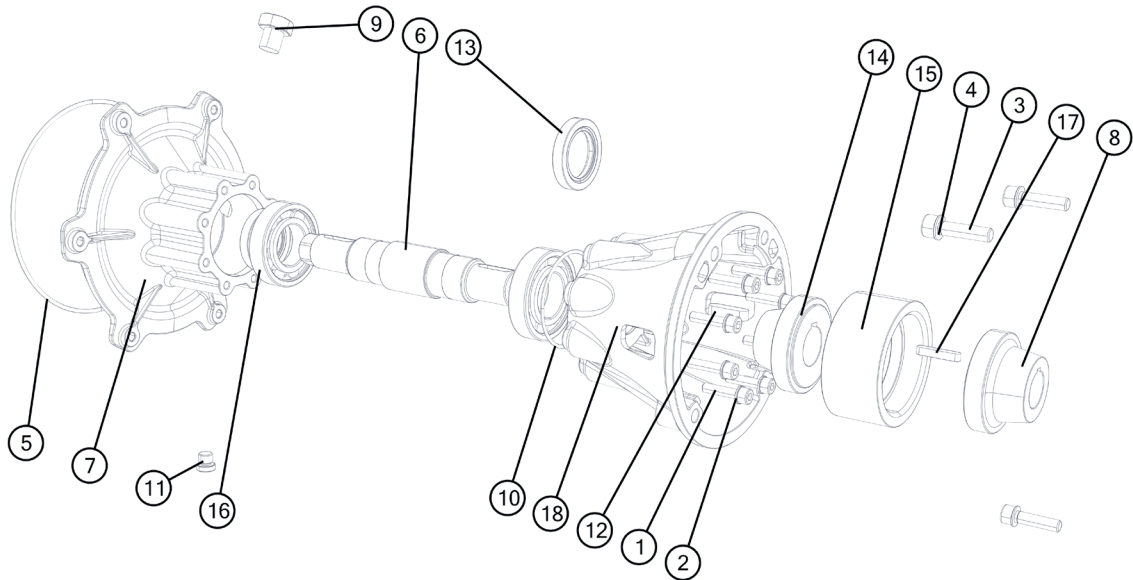
PART NO	PART DESCRIPTION	QTY
11	M14x15 BLIND CAP	1
12	COTTER 10x35	1
13	40x60x10 SHAFT SEAL	2
14	PUMP COUPLING	1
15	M18-1.5x40 HEX BOLT	1
16	COUPLING PLASTIC	1
17	6208 DDU C3 2RS BALL BEARING	2
18	MOTOR FLANGE	1

P1 - GASOLINE BEARING



PART NO	PART DESCRIPTION	QTY	PART NO	PART DESCRIPTION	QTY
1	M8x35 HEX SOCKET BOLT	8	11	M14x15 BLIND CAP	1
2	M8 WASHER	8	12	COTTER 10x35	1
3	W3/8x16x40 HEX SOCKET BOLT	4	13	40x60x10 SHAFT SEAL	2
4	M10 WASHER	4	14	PUMP COUPLING	1
5	ORING 4x185	1	15	COUPLING PLASTIC	1
6	PUMP SHAFT	1	16	6208 DDU C3 2RS BALL BEARING	2
7	PUMP SHAFT BEARING	1	17	COTTER 6.35x35	1
8	MOTOR COUPLING	1	18	MOTOR FLANGE	1
9	M20x15 BLIND CAP	1			
10	ORING 3x80	1			

P2 - GASOLINE BEARING



PART NO	PART DESCRIPTION	QTY	PART NO	PART DESCRIPTION	QTY
1	M8x35 HEX SOCKET BOLT	8	11	M14x15 BLIND CAP	1
2	M8 WASHER	8	12	COTTER M10x35	1
3	W3/8x16x40 HEX SOCKET BOLT	4	13	40x60x10 SHAFT SEAL	2
4	M10 WASHER	4	14	PUMP COUPLING	1
5	ORING 4x200	1	15	COUPLING PLASTIC	1
6	PUMP SHAFT	1	16	6208 DDU C3 2RS BALL BEARING	2
7	PUMP SHAFT BEARING	1	17	6.35x36 COTTER	1
8	MOTOR COUPLING	1	18	MOTOR FLANGE	1
9	M20x15 BLIND CAP	1			
10	ORING 3x80	1			


TECHNICAL SPECIFICATION

P1 GASOLINE	
ENGINE TYPE	4 CYCLE
NUMBER OF ENGINE CYLINDER	2 CYLINDER
COOLING SYSTEM	AIR COOLED
ENGINE BORE x STROKE	75,50 x 70,00 mm
PISTON DISPLACEMENT	627 cc
ENGINE OUTPUT	17,2 Kw – 23 HP
ENGINE FUEL TYPE	Gasoline
ENGINE FUEL TANK CAPACITY	6 LT (Optional 20 LT)
ENGINE FUEL CONSUMPTION	4 LT/SAAT (Full Stroke)
ENGINE FUEL SYSTEM	DIRECT FUEL INJECTION
ENGINE OIL TANK CAPACITY	1,7 LT
ENGINE STRATING	ELECTRIC AND MANUAL
PUMP SUCTION SYSTEM	MECHANIC PATENTED SUCTION SYSTEM
PUMP TYPE	SINGLE STAGE CENTRIFUGAL P.
PUMP SUCTION TYPE AND DIA	STORZ - 4"
PUMP DISCHARGE TYPE AND DIA	STORZ - 2,5" (Optional 2,5" BS, GOST, NH)
PUMP DISCHARGE NUMBER	TWIN OUTLET
PUMP DISCHARGE VALVE	BALL VALVE
PUMP BEARING OIL CAPACITY	150 ml
DRY WEIGHT	70 KG
READY TO WORK WEIGHT	80 KG
OVERALL DIMENSION (mm)	500 x 850 x 750

P1 DIESEL	
ENGINE TYPE	4 CYCLE
NUMBER OF ENGINE CYLINDER	2 CYLINDER
COOLING SYSTEM	AIR COOLED
ENGINE BORE x STROKE	90,00 x 75,00 mm
PISTON DISPLACEMENT	954 cc
ENGINE OUTPUT	17 kW – 23 HP
ENGINE FUEL TYPE	Diesel
ENGINE FUEL TANK CAPACITY	6 LT
ENGINE FUEL CONSUMPTION	4 LT/SAAT (Full Stroke)
ENGINE FUEL SYSTEM	DIRECT FUEL INJECTION
ENGINE OIL TANK CAPACITY	3 LT
ENGINE STRATING	ELECTRIC
PUMP SUCTION SYSTEM	MECHANIC PATENTED SUCTION SYSTEM
PUMP TYPE	SINGLE STAGE CENTRIFUGAL P.
PUMP SUCTION TYPE AND DIA	STORZ - 4"
PUMP DISCHARGE TYPE AND DIA	STORZ - 2,5" (Optional 2,5" BS, GOST, NH)
PUMP DISCHARGE NUMBER	TWIN OUTLET
PUMP DISCHARGE VALVE	BALL VALVE
PUMP BEARING OIL CAPACITY	150 ml
DRY WEIGHT	125 KG
READY TO WORK WEIGHT	140 KG
OVERALL DIMENSION (mm)	600 x 850 x 750

P2 GASOLINE	
ENGINE TYPE	4 ZAMANLI
NUMBER OF ENGINE CYLINDER	2 SİLİNDİR
COOLING SYSTEM	HAVA SOĞUTMALI
ENGINE BORE x STROKE	86,00 x 79,00 mm
PISTON DISPLACEMENT	993 cc
ENGINE OUTPUT	27,6 Kw – 37 HP
ENGINE FUEL TYPE	Gasoline
ENGINE FUEL TANK CAPACITY	20 LT
ENGINE FUEL CONSUMPTION	8 LT/HR (Full Stroke)
ENGINE FUEL SYSTEM	ELECTRONIC FUEL INJECTION
ENGINE OIL TANK CAPACITY	2,3 LT
ENGINE STRATING	ELECTRIC
PUMP SUCTION SYSTEM	MECHANIC PATENTED SUCTION SYSTEM
PUMP TYPE	SINGLE STAGE CENTRIFUGAL P.
PUMP SUCTION TYPE AND DIA	STORZ - 4"
PUMP DISCHARGE TYPE AND DIA	STORZ - 2,5" (Optional 2,5" BS, GOST, NH)
PUMP DISCHARGE NUMBER	TWIN OUTLET
PUMP DISCHARGE VALVE	BALL VALVE
PUMP BEARING OIL CAPACITY	150 ml
DRY WEIGHT	105 KG
READY TO WORK WEIGHT	135 KG
OVERALL DIMENSION (mm)	600 x 850 x 750

WARRANTY CERTIFICATE

<p>Kube Pompa Teknolojileri Sanayi Ticaret A.Ş.</p> <p>Adress : Uzunbey Mh. Çengel Cd. No: 6 41180 Kartepe Kocaeli Türkiye</p> <p>Phone : +90 262 371 4174</p> <p>Fax : +90 262 371 4176</p> <p>E-Mail : kube@kubepompa.com</p> <p>Company Stamp</p> 	<p>Customer :</p> <p>Adress :</p> <p>Phone :</p> <p>Fax :</p> <p>E-Mail :</p> <p>Company Stamp</p>
--	--

INFORMATION OF THE PRODUCT

<p>Model: <input type="checkbox"/> P1 Gasoline <input type="checkbox"/> P1 Diesel <input type="checkbox"/> P2 Gasoline</p> <p>Serial No:</p>	<p>Warranty Period: 2 YEAR</p> <p>Delivery Date:/...../.....</p>
--	--

WARRANTY CONDITIONS

- 1- The warranty period starts from the delivery date of the goods and is 2 years.
- 2- All parts of the motopump except the engine are under warranty. The engine is also under warranty by the engine manufacturer.
- 3- All kinds of malfunctions that may arise from faulty material selection and faulty workmanship used in the manufacture of Motopump will be repaired by Kube Pump free of charge. In cases where repair is not possible, the replacement of the relevant parts or the complete replacement of the product will be provided.
- 4- The repair period of the goods cannot exceed 20 working days. If this period is within the warranty period, on the date of notification of the malfunction related to the goods to the authorized service station or the seller; If it is out of warranty period, it starts from the date of delivery of the goods to the authorized service station. In case of malfunction of the product within the warranty period, the time spent in the repair is added to the warranty period.
- 5- Defects resulting from the use of the product contrary to the terms in the user manual are not covered by the warranty.
- 6- Defects arising from non-compliance with the maintenance plan in the user manual of the product are not covered by the warranty.
- 7- Unless otherwise stated in the contract, invoice or pro forma offer, the transportation, loading and unloading of the goods are under the responsibility of the buyer, and any damage and malfunction that may occur during this period is the responsibility of the buyer. Damages and malfunctions that may occur during the transportation, loading and unloading of the goods are not covered by the warranty.
- 8- It is the customer's responsibility to ensure that the motopump operates in a safe environment where it is used by the customer. Damages and malfunctions that may result from natural disasters are not covered by the warranty.
- 9- Damages and malfunctions that may arise as a result of incorrect or inappropriate use of the motopump by the user or the use of unauthorized personnel who have not received training are not covered by the warranty.
- 10- Kube Pompa undertakes and guarantees to supply spare parts for the products for a period of 10 years.
- 11- The consumer may apply to the Consumer Court in the place of residence or the place where the consumer transaction is made, in case of disputes that may arise regarding the exercise of their rights arising from the guarantee.



 www.kubepompa.com  kube@kubepompa.com

 +90 (262) 371 41 74  Çengel Caddesi No:6 Uzunbey / Kocaeli / **TÜRKİYE**